


General Purpose 3 Φ Distribution Transformers



Class: R (220°C), 600V, Dry Type
CONSTRUCTION: Aluminum Windings
COOLING: Convection Air Cooled
Temperature Rise: 150°C
INPUT: Delta, 60HZ
OUTPUT: WYE

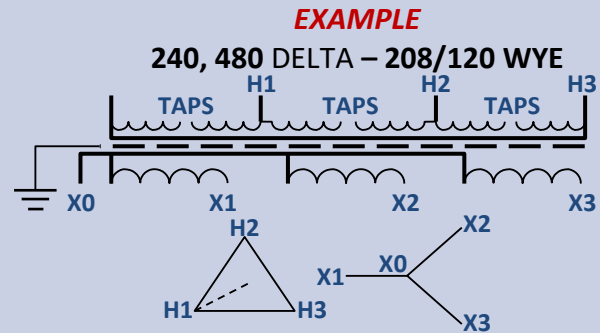
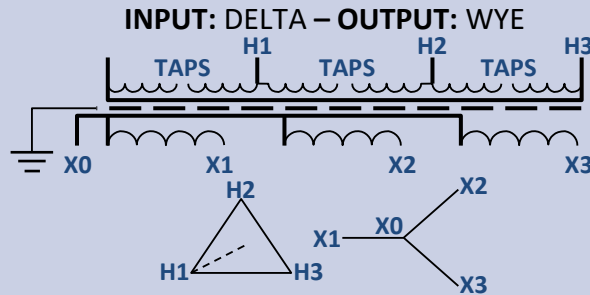


General Purpose 3 Φ Distribution Transformers

| General Information | Standard Features | Sound Levels | | | | | | | | | | | | | | | | | | | | |
|--|---|---|---------------------|----------|--------|----|--------|----|--------|----|---------|-------|---------|-----|--------|-----|--------|-----|--------|-----|--------|---|
| <p>PTC Dry type transformers are designed, manufactured and tested in accordance with all applicable NEMA, ANSI and IEEE standards.</p> <p>PTC 600 Volt class transformers are UL, CUL, and CSA listed in accordance to standards UL506 and UL1561 and are classified as isolation transformers.</p> | <p>DOE 2016 Compliant UL 506, UL 1561, CSA Listed Aluminum/Copper (YS, DS) 60 Hz 150°C Temperature Rise ANSI C57.12.01 Seismic Zone IV Compliant 220°C Insulation System</p> | <p>PTC 600 Volt class general purpose dry type transformers are designed to meet NEMA ST-20 sound levels. NEMA standard sound levels;</p> <table border="1" style="margin-left: auto; margin-right: auto; border-collapse: collapse;"> <thead> <tr style="background-color: #f2f2f2;"> <th>KVA</th> <th>dB Level</th> </tr> </thead> <tbody> <tr> <td style="text-align: center;">0-9</td> <td style="text-align: center;">40</td> </tr> <tr> <td style="text-align: center;">10-50</td> <td style="text-align: center;">45</td> </tr> <tr> <td style="text-align: center;">51-150</td> <td style="text-align: center;">50</td> </tr> <tr> <td style="text-align: center;">151-300</td> <td style="text-align: center;">55</td> </tr> <tr> <td style="text-align: center;">301-500</td> <td style="text-align: center;">60</td> </tr> </tbody> </table> | KVA | dB Level | 0-9 | 40 | 10-50 | 45 | 51-150 | 50 | 151-300 | 55 | 301-500 | 60 | | | | | | | | |
| KVA | dB Level | | | | | | | | | | | | | | | | | | | | | |
| 0-9 | 40 | | | | | | | | | | | | | | | | | | | | | |
| 10-50 | 45 | | | | | | | | | | | | | | | | | | | | | |
| 51-150 | 50 | | | | | | | | | | | | | | | | | | | | | |
| 151-300 | 55 | | | | | | | | | | | | | | | | | | | | | |
| 301-500 | 60 | | | | | | | | | | | | | | | | | | | | | |
| Enclosures | Common Options | Testing & Quality Assurance | | | | | | | | | | | | | | | | | | | | |
| <p>PTC ventilated transformers utilize a NEMA 2 rated drip proof metal enclosure with natural draft ventilation.</p> <p>PTC dual rated enclosures are suitable for indoor or outdoor applications and are standard on all models except the 225, 300, and 500 kVA transformers (optional Weather-shield Kits are available for these units).</p> | <ul style="list-style-type: none"> • Copper Windings (CS, SS) • Outdoor NEMA-3R Kit • 80° & 115°C Temperature Rise • K-Factor; up to K20 • Wall Mount Brackets (15 - 75 kVA) • 50 Hz, 50/60 Hz, 400 Hz • Totally Enclosed Non Ventilated • Any Voltage Arrangement • Stainless Steel Case (304, 316) • Reduced Sound Level • OSHPD Seismic Kit • ARRA/Buy American Statues | <p>As part of our quality assurance process, all 600 Volt PTC Transformers go through a rigorous ANSI/IEEE test plan to ensure optimum performance.</p> <p>These tests include:</p> <ul style="list-style-type: none"> • Winding resistance test • Turn ratio test • Polarity and phase relation test • No load losses and exciting current test • Impedance and load loss test • Applied potential test | | | | | | | | | | | | | | | | | | | | |
| Voltage Taps | Efficiency | Single Side Access (Internal View) | | | | | | | | | | | | | | | | | | | | |
| <p>Taps will compensate for the high or low line voltages.</p> <p>PTC 600 Volt class transformers are provided with 6 primary taps:</p> <ul style="list-style-type: none"> • 2@ 2-1/2% FCAN (Above Normal) • 4@ 2-1/2% FCBN (Below Normal) | <table border="1" style="margin-left: auto; margin-right: auto; border-collapse: collapse;"> <thead> <tr style="background-color: #f2f2f2;"> <th>KVA</th> <th>DOE 2016 Efficiency</th> </tr> </thead> <tbody> <tr> <td style="text-align: center;">15</td> <td style="text-align: center;">97.89%</td> </tr> <tr> <td style="text-align: center;">30</td> <td style="text-align: center;">98.23%</td> </tr> <tr> <td style="text-align: center;">45</td> <td style="text-align: center;">98.40%</td> </tr> <tr> <td style="text-align: center;">75</td> <td style="text-align: center;">98.60%</td> </tr> <tr> <td style="text-align: center;">112.5</td> <td style="text-align: center;">98.74%</td> </tr> <tr> <td style="text-align: center;">150</td> <td style="text-align: center;">98.83%</td> </tr> <tr> <td style="text-align: center;">225</td> <td style="text-align: center;">98.94%</td> </tr> <tr> <td style="text-align: center;">300</td> <td style="text-align: center;">99.02%</td> </tr> <tr> <td style="text-align: center;">500</td> <td style="text-align: center;">99.14%</td> </tr> </tbody> </table> | KVA | DOE 2016 Efficiency | 15 | 97.89% | 30 | 98.23% | 45 | 98.40% | 75 | 98.60% | 112.5 | 98.74% | 150 | 98.83% | 225 | 98.94% | 300 | 99.02% | 500 | 99.14% |  |
| KVA | DOE 2016 Efficiency | | | | | | | | | | | | | | | | | | | | | |
| 15 | 97.89% | | | | | | | | | | | | | | | | | | | | | |
| 30 | 98.23% | | | | | | | | | | | | | | | | | | | | | |
| 45 | 98.40% | | | | | | | | | | | | | | | | | | | | | |
| 75 | 98.60% | | | | | | | | | | | | | | | | | | | | | |
| 112.5 | 98.74% | | | | | | | | | | | | | | | | | | | | | |
| 150 | 98.83% | | | | | | | | | | | | | | | | | | | | | |
| 225 | 98.94% | | | | | | | | | | | | | | | | | | | | | |
| 300 | 99.02% | | | | | | | | | | | | | | | | | | | | | |
| 500 | 99.14% | | | | | | | | | | | | | | | | | | | | | |

General Purpose 3Φ Distribution Transformers

WIRING DIAGRAM | VOLTAGE TAPS



| CONNECT TAPS | | PRIMARY VOLTAGE |
|--------------|---------------|-----------------|
| 15 - 150 kVA | 225 - 500 kVA | BOOST / BUCK |
| *H-7 | 4-5 | +5% |
| H-6 | 4-6 | +2.5% |
| H-5 | 3-5 | NOMINAL |
| H-4 | 3-6 | -2.5% |
| H-3 | 2-6 | -5% |
| H-2 | 3-7 | -7.5% |
| H-1 | 2-7 | -10% |

| CONNECT TAPS | | PRIMARY VOLTAGE | |
|--------------|---------------|-----------------|-----|
| 15 - 150 kVA | 225 - 500 kVA | 240 | 480 |
| *H-7 | 4-5 | 252 | 504 |
| H-6 | 4-6 | 246 | 492 |
| H-5 | 3-5 | 240 | 480 |
| H-4 | 3-6 | 234 | 468 |
| H-3 | 2-6 | 228 | 456 |
| H-2 | 3-7 | 222 | 444 |
| H-1 | 2-7 | 216 | 432 |

*H represents H1, H2, H3 on all the three coils.

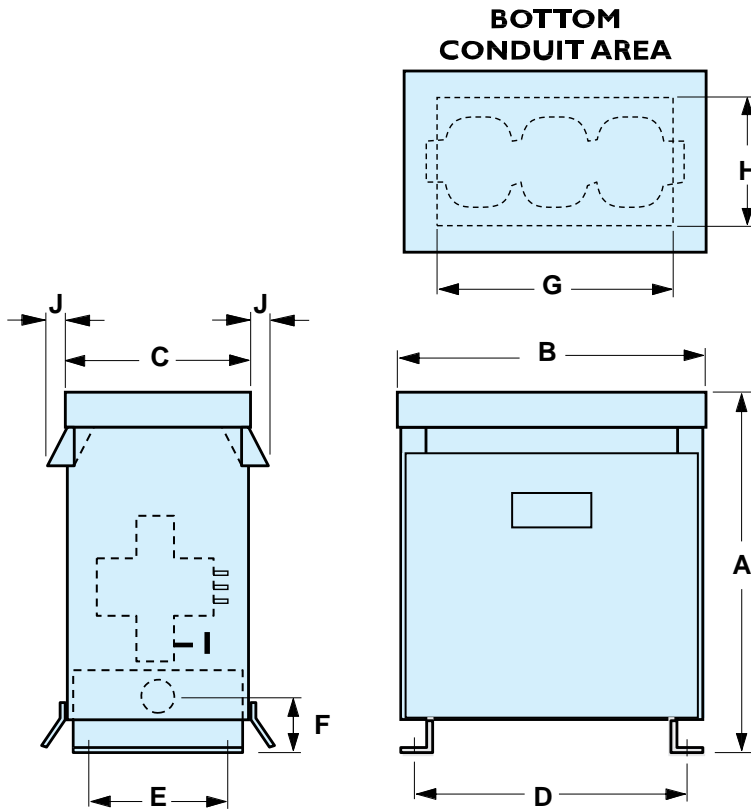
Common Configurations

Additional options are available

| DELTA (H) | WYE (X) | Pacific Transformer |
|---------------|-----------------|---------------------|
| Primary Volts | Secondary Volts | Part Number |
| 208 | 208 | 208208-xxKVA-AL |
| 208 | 240 | 208240-xxKVA-AL |
| 208 | 480 | 208480-xxKVA-AL |
| 208 | 600 | 208600-xxKVA-AL |
| 208 | 400 | 208400-xxKVA-AL |
| 220 | 480 | 220480-xxKVA-AL |
| 240 | 240 | 240240-xxKVA-AL |
| 240 | 480 | 240480-xxKVA-AL |
| 240 | 600 | 240600-xxKVA-AL |
| 240 | 208 | 240208-xxKVA-AL |
| 250 | 250 | 250250-xxKVA-AL |
| 480 | 480 | 480480-xxKVA-AL |
| 480 | 600 | 480600-xxKVA-AL |
| 480 | 208 | 480208-xxKVA-AL |
| 480 | 240 | 480240-xxKVA-AL |
| 480 | 230 | 480230-xxKVA-AL |
| 600 | 600 | 600600-xxKVA-AL |
| 600 | 208 | 600208-xxKVA-AL |
| 600 | 240 | 600240-xxKVA-AL |
| 600 | 480 | 600480-xxKVA-AL |

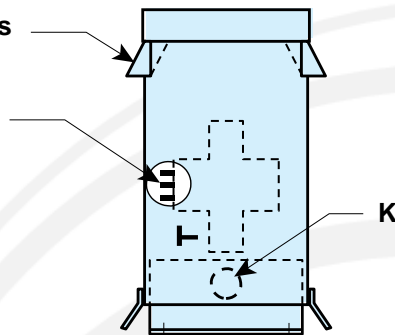
| Standard & Optional* | Approximate |
|----------------------|--------------|
| -xx KVA Rating | Weight (LBS) |
| 14* | 250 |
| 15 | 265 |
| 18* | 300 |
| 20* | 350 |
| 27* | 375 |
| 30 | 400 |
| 34* | 420 |
| 40* | 450 |
| 51* | 500 |
| 54* | 525 |
| 60* | 550 |
| 63* | 575 |
| 75 | 600 |
| 93* | 750 |
| 112.5 | 1000 |
| 118 | 1100 |
| 150 | 1500 |
| 225 | 2250 |
| 300 | 3000 |
| 500 | 5000 |

General Purpose 3Φ Distribution Transformers



Weather-Shields
(optional)

Primary
Taps



AVAILABLE ACCESSORIES

| |
|--------------------------------|
| Bottom Mount Wall Bracket |
| Side Mount Wall Bracket |
| OSHPD Seismic Kits |
| Rain Hoods/Weather Shield Kits |
| Rodent/Bird Screen |

Submit your quote request to: Sales@pactran.com

| KVA | DIMENSIONS (Inches) | | | | | | | | | | Wall Bracket | Weather Shield | Enclosure |
|-----------|---------------------|-------------------|-------------------|-------------------|-------------------|-------------------|-------------------|-------------------|------------------|------|-----------------|-------------------|-----------|
| | A | B | C | D | E | F | G | H | J | K | | | |
| 9 - 15 | 28 | 21 | 14 | 18 ^{1/2} | 11 ^{1/2} | - | 16 | 7 | - | - | WB1/NWB | † | GPA |
| 25 - 50 | 32 | 26 ^{1/2} | 17 | 23 | 14 | - | 21 ^{1/2} | 10 | - | - | WB1/NWB | † | GPB |
| 75 | 38 ^{1/2} | 28 ^{1/2} | 20 | 26 | 17 ^{1/2} | - | 23 ^{1/2} | 13 ^{1/2} | - | - | WB2/NWB | † | GPB+ |
| 112.5 | 40 ^{1/2} | 31 ^{1/2} | 21 ^{3/4} | 28 ^{1/2} | 19 | - | 26 ^{1/2} | 14 ^{3/4} | - | - | - | † | GPC |
| 150 | 40 ^{1/2} | 36 ^{1/2} | 21 ^{3/4} | 33 ^{1/2} | 19 | - | 31 ^{1/2} | 14 ^{3/4} | - | - | - | † | GPC+ |
| 225 - 300 | 51 ^{1/2} | 40 ^{1/2} | 26 ^{1/2} | 37 | 21 | 10 ^{1/2} | 34 | 19 | 4 ^{5/8} | 5" | - | RH5* | GPD |
| 500 | 66 | 50 ^{1/2} | 32 | 47 ^{1/2} | 24 | 11 ^{1/2} | 44 | 24 | 4 ^{5/8} | 2-5" | - | RH6* | GPE |

*GPD and GPE enclosures require weather shield kits for outdoor (NEMA 3R) installations.

† Dual rated enclosures suitable for indoor or outdoor installations. (NEMA 1, NEMA 3R)