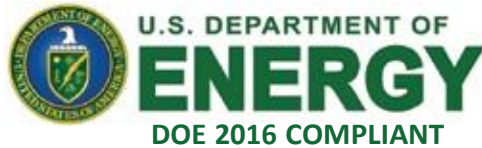



General Purpose 3 Φ Distribution Transformers



Class: R (220°C), 600V, Dry Type
CONSTRUCTION: Aluminum Windings
COOLING: Convection Air Cooled
Temperature Rise: 150°C
INPUT: Delta, 60HZ
OUTPUT: WYE



General Purpose 3 Φ Distribution Transformers

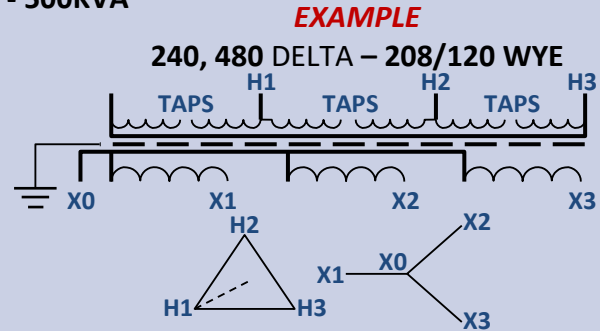
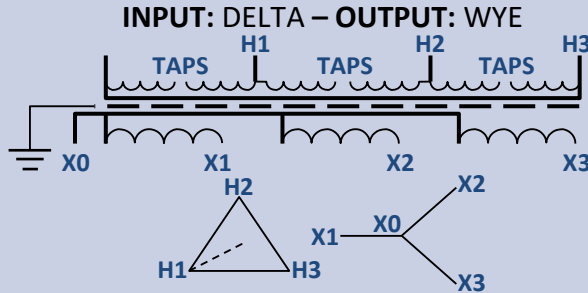
General Information	Standard Features	Sound Levels																				
<p>PTC Dry type transformers are designed, manufactured and tested in accordance with all applicable NEMA, ANSI and IEEE standards.</p> <p>PTC 600 Volt class transformers are UL, CUL, and CSA listed in accordance to standards UL506 and UL1561 and are classified as isolation transformers.</p>	<p>DOE 2016 Compliant UL 506, UL 1561, CSA Listed Aluminum/Copper (YS, DS) 60 Hz 150°C Temperature Rise ANSI C57.12.01 Seismic Zone IV Compliant 220°C Insulation System</p>	<p>PTC 600 Volt class general purpose dry type transformers are designed to meet NEMA ST-20 sound levels.</p> <p>NEMA standard sound levels</p> <table border="1" data-bbox="1092 562 1360 772"> <thead> <tr> <th>KVA</th> <th>dB Level</th> </tr> </thead> <tbody> <tr> <td>0-9</td> <td>40</td> </tr> <tr> <td>10-50</td> <td>45</td> </tr> <tr> <td>51-150</td> <td>50</td> </tr> <tr> <td>151-300</td> <td>55</td> </tr> <tr> <td>301-500</td> <td>60</td> </tr> </tbody> </table>	KVA	dB Level	0-9	40	10-50	45	51-150	50	151-300	55	301-500	60								
KVA	dB Level																					
0-9	40																					
10-50	45																					
51-150	50																					
151-300	55																					
301-500	60																					
Enclosures	Common Options	Testing & Quality Assurance																				
<p>PTC ventilated transformers utilize a NEMA 2 rated drip proof metal enclosure with natural draft ventilation.</p> <p>PTC dual rated enclosures are suitable for indoor or outdoor applications and are standard on all models except the 225, 300, and 500 kVA transformers (optional Weather-shield Kits are available for these units).</p>	<ul style="list-style-type: none"> • Copper Windings (CS, SS) • Outdoor NEMA-3R Kit • 80° & 115°C Temperature Rise • K-Factor; up to K20 • Wall Mount Brackets (15 - 75 kVA) • 50 Hz, 50/60 Hz, 400 Hz • Totally Enclosed Non Ventilated • Any Voltage Arrangement • Stainless Steel Case (304, 316) • Reduced Sound Level • OSHPD Seismic Kit • ARRA/Buy American Statues 	<p>As part of our quality assurance process, all 600 Volt PTC Transformers go through a rigorous ANSI/IEEE test plan to ensure optimum performance.</p> <p>These tests include:</p> <ul style="list-style-type: none"> • Winding resistance test • Turn ratio test • Polarity and phase relation test • No load losses and exciting current test • Impedance and load loss test • Applied potential test 																				
Voltage Taps	Efficiency	Single Side Access (Internal View)																				
<p>Taps will compensate for the high or low line voltages.</p> <p>PTC 600 Volt class transformers are provided with 6 primary taps:</p> <ul style="list-style-type: none"> • 2@ 2-1/2% FCAN (Above Normal) • 4@ 2-1/2% FCBN (Below Normal) 	<table border="1" data-bbox="539 1308 980 1680"> <thead> <tr> <th>KVA</th> <th>DOE 2016 Efficiency</th> </tr> </thead> <tbody> <tr> <td>15</td> <td>97.89%</td> </tr> <tr> <td>30</td> <td>98.23%</td> </tr> <tr> <td>45</td> <td>98.40%</td> </tr> <tr> <td>75</td> <td>98.60%</td> </tr> <tr> <td>112.5</td> <td>98.74%</td> </tr> <tr> <td>150</td> <td>98.83%</td> </tr> <tr> <td>225</td> <td>98.94%</td> </tr> <tr> <td>300</td> <td>99.02%</td> </tr> <tr> <td>500</td> <td>99.14%</td> </tr> </tbody> </table>	KVA	DOE 2016 Efficiency	15	97.89%	30	98.23%	45	98.40%	75	98.60%	112.5	98.74%	150	98.83%	225	98.94%	300	99.02%	500	99.14%	
KVA	DOE 2016 Efficiency																					
15	97.89%																					
30	98.23%																					
45	98.40%																					
75	98.60%																					
112.5	98.74%																					
150	98.83%																					
225	98.94%																					
300	99.02%																					
500	99.14%																					

General Purpose 3Φ Distribution Transformers

TERMINAL INDICATOR		
TYPE	INPUT	OUTPUT
Step-Up	X	H
Step-Down	H	X
Same Voltage	H	X

WIRING DIAGRAM | VOLTAGE TAPS

THREE PHASE, 15KVA - 500KVA



CONNECT TAPS		PRIMARY VOLTAGE
15 - 150 kVA	225 - 500 kVA	BOOST / BUCK
*H-7	4-5	+5%
H-6	4-6	+2.5%
H-5	3-5	NOMINAL
H-4	3-6	-2.5%
H-3	2-6	-5%
H-2	3-7	-7.5%
H-1	2-7	-10%

CONNECT TAPS		PRIMARY VOLTAGE	
15 - 150 kVA	225 - 500 kVA	240	480
*H-7	4-5	252	504
H-6	4-6	246	492
H-5	3-5	240	480
H-4	3-6	234	468
H-3	2-6	228	456
H-2	3-7	222	444
H-1	2-7	216	432

*H represents H1, H2, H3 on all the three coils.

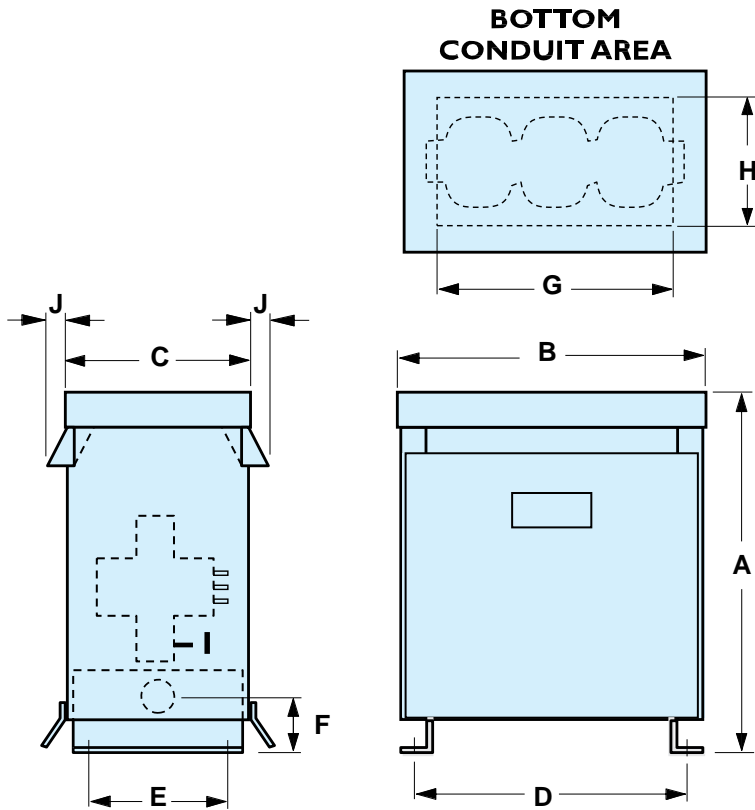
Common Configurations

Additional options are available

DELTA Primary Volts	WYE Secondary Volts	Pacific Transformer Part Number
208	208	40733-xxKVA-AL
208	240	40734-xxKVA-AL
208	480	40735-xxKVA-AL
208	600	40736-xxKVA-AL
220	480	40789-xxKVA-AL
240	240	40737-xxKVA-AL
240	480	40738-xxKVA-AL
240	600	40739-xxKVA-AL
240	208	40771-xxKVA-AL
250	250	40737-xxKVA-AL
480	480	40740-xxKVA-AL
480	600	40741-xxKVA-AL
480	208	40772-xxKVA-AL
480	240	40774-xxKVA-AL
480	230	40788-xxKVA-AL
600	600	40742-xxKVA-AL
600	208	40773-xxKVA-AL
600	240	40775-xxKVA-AL
600	480	40776-xxKVA-AL

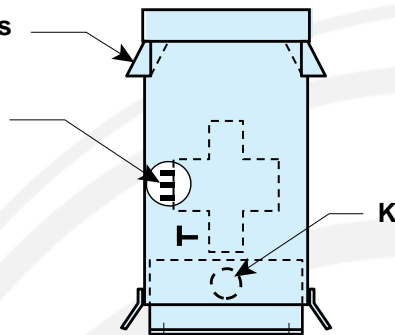
Standard & Optional* -xx KVA Rating	Approximate Weight (LBS)
14	250
18*	300
20*	350
27*	375
30	400
34*	420
40*	450
51*	500
54*	525
60*	550
63*	575
75	600
93*	750
112.5	1000
118	1100
150	1500
225	2250
300	3000
500	5000

General Purpose 3Φ Distribution Transformers



**Weather-Shields
(optional)**

**Primary
Taps**



AVAILABLE ACCESSORIES
Bottom Mount Wall Bracket
Side Mount Wall Bracket
OSHPD Seismic Kits
Rain Hoods/Weather Shield Kits
Rodent/Bird Screen

Submit your quote request to: Sales@pactran.com

KVA	DIMENSIONS (Inches)										Wall Bracket	Weather Shield	Enclosure
	A	B	C	D	E	F	G	H	J	K			
9 - 15	28	21	14	18 ^{1/2}	11 ^{1/2}	-	16	7	-	-	WB1/NWB	†	GPA
25 - 50	32	26 ^{1/2}	17	23	14	-	21 ^{1/2}	10	-	-	WB1/NWB	†	GPB
75	38 ^{1/2}	28 ^{1/2}	20	26	17 ^{1/2}	-	23 ^{1/2}	13 ^{1/2}	-	-	WB2/NWB	†	GPB+
112.5	40 ^{1/2}	31 ^{1/2}	21 ^{3/4}	28 ^{1/2}	19	-	26 ^{1/2}	14 ^{3/4}	-	-	-	†	GPC
150	40 ^{1/2}	36 ^{1/2}	21 ^{3/4}	33 ^{1/2}	19	-	31 ^{1/2}	14 ^{3/4}	-	-	-	†	GPC+
225 - 300	51 ^{1/2}	40 ^{1/2}	26 ^{1/2}	37	21	10 ^{1/2}	34	19	4 ^{5/8}	5"	-	RH5*	GPD
500	66	50 ^{1/2}	32	47 ^{1/2}	24	11 ^{1/2}	44	24	4 ^{5/8}	2-5"	-	RH6*	GPE

*GPD and GPE enclosures require weather shield kits for outdoor (NEMA 3R) installations.

† Dual rated enclosures suitable for indoor or outdoor installations. (NEMA 1, NEMA 3R)